



Special Election Ballots must be returned by January 26 at 8pm

YES ON MEASURES 66 & 67

Special Election Guide

Simple and Clear **INFORMATION** and **RECOMMENDATIONS**
from the **ORGANIZATIONS YOU TRUST:**

AARP Oregon
American Federation of Teachers
Children First for Oregon
Ecumenical Ministries of Oregon
Elders In Action Commission
Oregon AFL-CIO
Oregon AFSCME
Oregon Alliance for Retired Americans
Oregon Consumer League
Oregon Council of Police Associations
Oregon Education Association
Oregon Environmental Council
Oregon Health Care Association

League of Women Voters of Oregon
Oregon League of Conservation Voters
Oregon Nurses Association
Oregon PTA
Oregon State Building &
Construction Trades Council
Oregon State Firefighters Council
Oregonians for Health Security
Partnership for Safety and Justice
Rural Organizing Project
SEIU Oregon State Council
Stand for Children
United Seniors of Oregon
Working America



411 NE 19th Ave
Portland, OR 97232

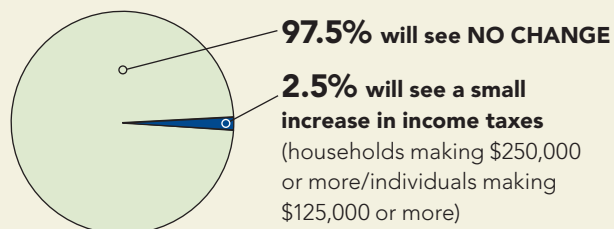


For the full list of over 200 businesses and organizations in the
Vote Yes for Oregon Coalition please go to www.voteyesfororegon.org

Vote Yes To Protect Our Schools, Senior and Children's Services

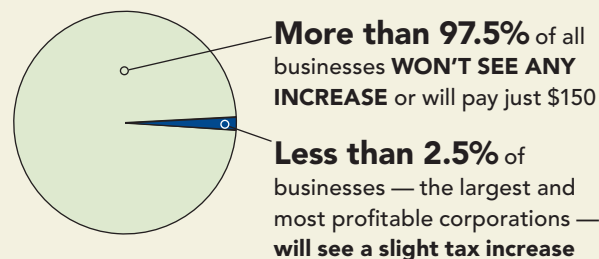
	What it Does	What Others Say	Why this Election?
<p>MEASURE 66 YES</p>	<ul style="list-style-type: none"> ▶ Provides \$472 million for schools, public safety and critical services. ▶ Increases marginal tax rate on household income above \$250,000 by 1.8 percentage points. If your household makes less than \$250,000, you won't pay a penny more. ▶ Reduces taxes for 270,000 taxpayers who were unemployed in 2009. 	<p>"[T]his particular change is not only needed to stave off more state budget cuts, but it is justified on the simple grounds of fairness."</p> <p>The Register-Guard (10/25/09)</p>	<p>These funds were part of the existing budget signed into law in July 2009, until corporate lobbyists held up implementation of the law by forcing this special election.</p> <p>Now it's up to you to determine who pays for the schools, senior services, and public safety services we all rely on — or whether those services will be cut.</p>
<p>MEASURE 67 YES</p>	<ul style="list-style-type: none"> ▶ Provides \$255 million for schools, public safety, and critical services. ▶ Raises the \$10 corporate minimum tax for the first time since 1931. Over 97% of businesses will pay just \$150 or will see no change in their taxes. ▶ Oregon's business taxes will still be the lowest on the West Coast and 5th lowest in the nation. 	<p>"The tax burden on Oregon businesses would still rank among the lowest in the nation if voters next month approve the corporate tax increases proposed in Measure 67."</p> <p>The Oregonian (12/12/09)</p>	

Measure 66: MOST PEOPLE UNAFFECTED



270,000 Oregonians will get a tax break on the first \$2,400 in unemployment benefits they received in 2009

Measure 67: MOST BUSINESSES UNAFFECTED



Where Does The Money Go?

